

Importing and Exporting Indoogrid Grids

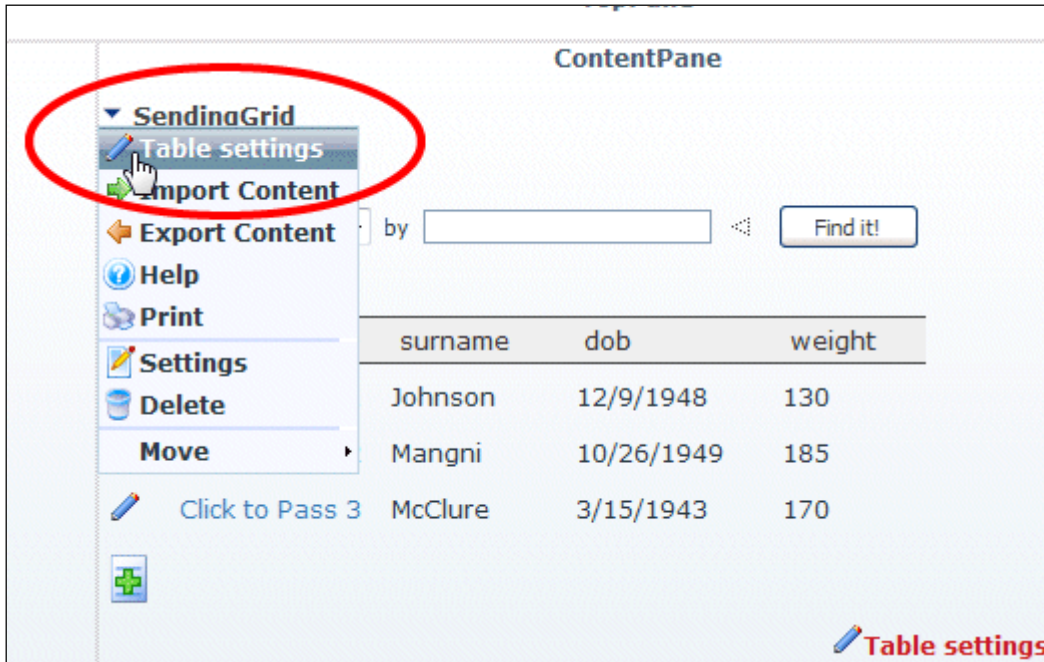
Jill Johnson 5/17/2009

It's very easy to export an Indoogrid structure to use as a backup or to duplicate a grid as a starting point for another grid. These files are also useful to share with others for troubleshooting or collaboration. With the exported text file and information on data structure, someone else can totally recreate your grid. I've gotten in the habit of exporting things intermittently as part of site backup. Exporting the grid structure **does not back of the content of the database**, only backs up the grid structure.

EXPORTING GRID STRUCTURES

The exports are XML text files that contain information for all the settings for a grid. If you want to duplicate a grid with all the settings you have customized, you can export it, then import it into a new grid and have a new copy to work with.

1. **Open Table Settings** for the grid you want to backup.



The screenshot shows a web interface titled "ContentPane". On the left, a vertical menu is open under the heading "SendinaGrid". The menu items are: "Table settings" (highlighted with a red circle), "Import Content", "Export Content", "Help", "Print", "Settings", "Delete", and "Move". To the right of the menu, there is a search box with the text "by" and a "Find it!" button. Below the search box is a table with three columns: "surname", "dob", and "weight". The table contains three rows of data: "Johnson", "12/9/1948", "130"; "Mangni", "10/26/1949", "185"; and "McClure", "3/15/1943", "170". At the bottom right of the interface, there is a "Table settings" link with a pencil icon.

2. **Click on 'Import/Export'** link near the top of the Table Settings page.

PASSTEST1 RECEIVETEST2 ADMIN HOST

here: [PassTest1](#)

▼ **EditIndooGrid**

TABLE SETTINGS

Select db provider:

Connection string:

Table (or view):

Unique key column:

Add columns [Automatically add all columns](#)

Clear settings [Remove all columns](#)

Import or export settings [Import/export](#)

GRIDVIEW SETTINGS

Show gridView settings:

Allow bulk import:

3. On the dialog page that opens, **click on 'Download file here' link.**

▼ **EditIndooGrid**

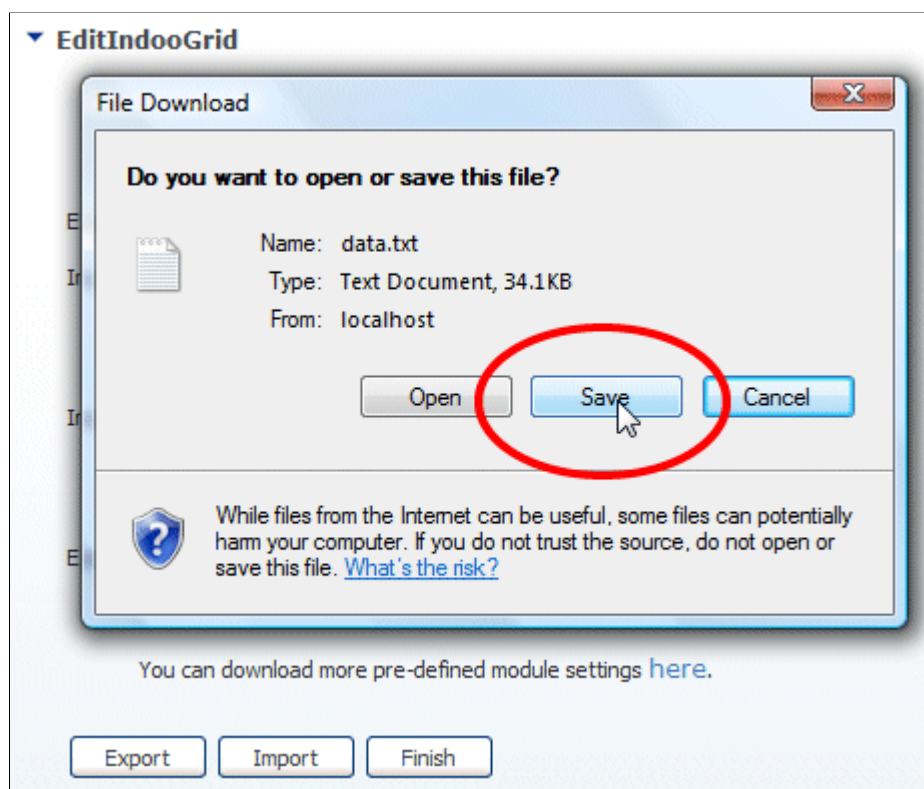
Export settings (file): [Download file here](#)

Import settings (file):

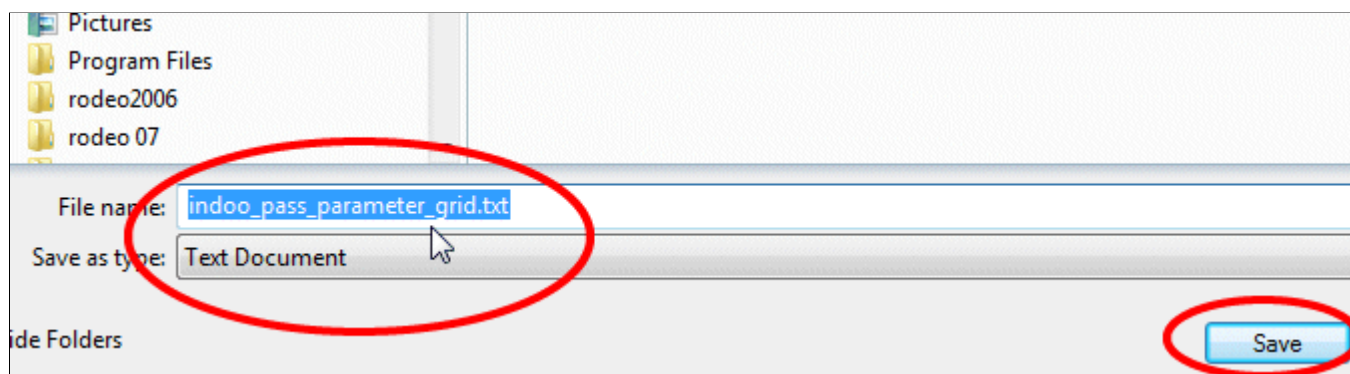
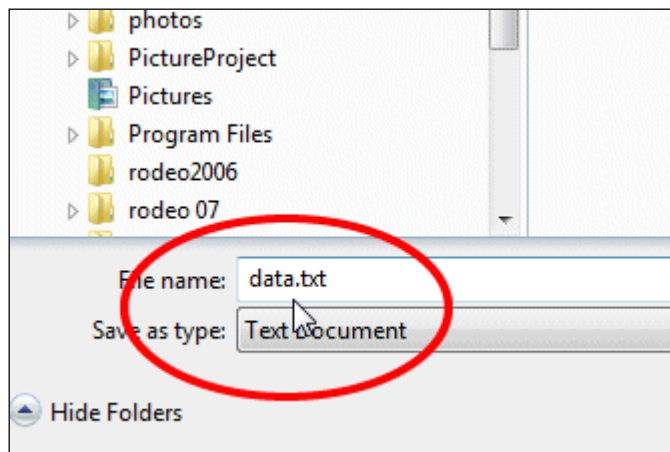
Import/export settings as text:

Execute sql(s) on import:

You can download more pre-defined module settings [here](#).

4. Click Save.

5. Depending on your browser, this **will either prompt you to select a name and location to save the file, or go ahead and save it automatically** under the name **data.txt**. RENAME the file something descriptive and save it in some known location, otherwise each download will potentially overwrite the file because the default name is always data.txt.



6. **Click Finish** after downloading the data file.

▼ EditIndooGrid

Export settings (file): ⓘ [Download file here](#)

Import settings (file): ⓘ

Import/export settings as text: ⓘ

Execute sql(s) on import: ⓘ

You can download more pre-defined module settings [here](#).

IMPORTING GRID STRUCTURES

1. Add a new Indoogrid module to a page.

Mode: View Edit Design

Page Functions

Add New Module Add Existing Module

Module: <Select A Module> ▼

Title: <Select A Module>

Visibility:


- <Select A Module>
- Account Login
- Banners
- Documents
- Events
- FAQs
- Feed Explorer
- IFrame
- IndooGrid**
- Links
- Search Input
- Search Results
- Text/HTML
- User Account
- UsersOnline

Pane: ContentPane

Insert: Bottom

Align: Left

Personal Modules



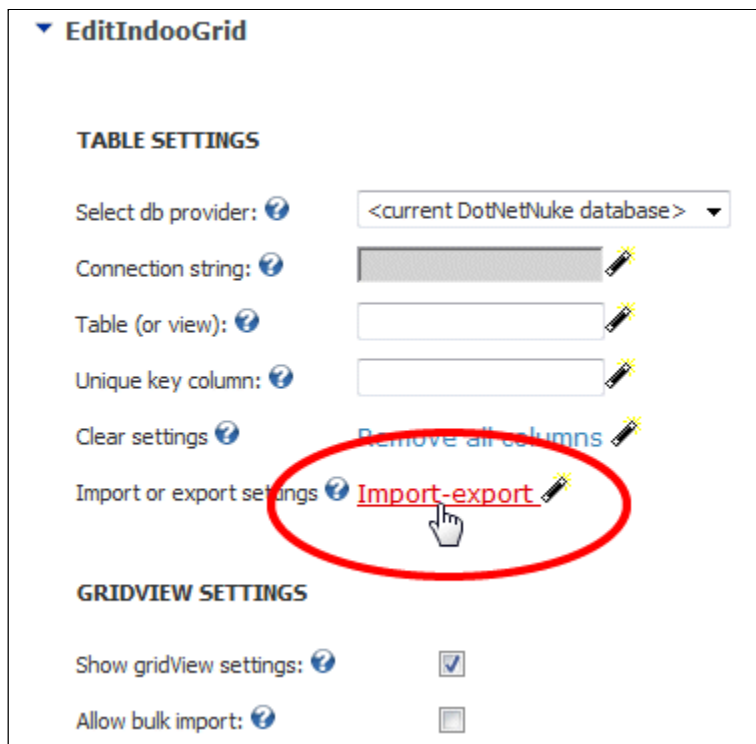
HOME PASSTEST1 RECEIVETEST2 **IMPORT GRID** ADMIN HOST

You are here: [Import Grid](#)

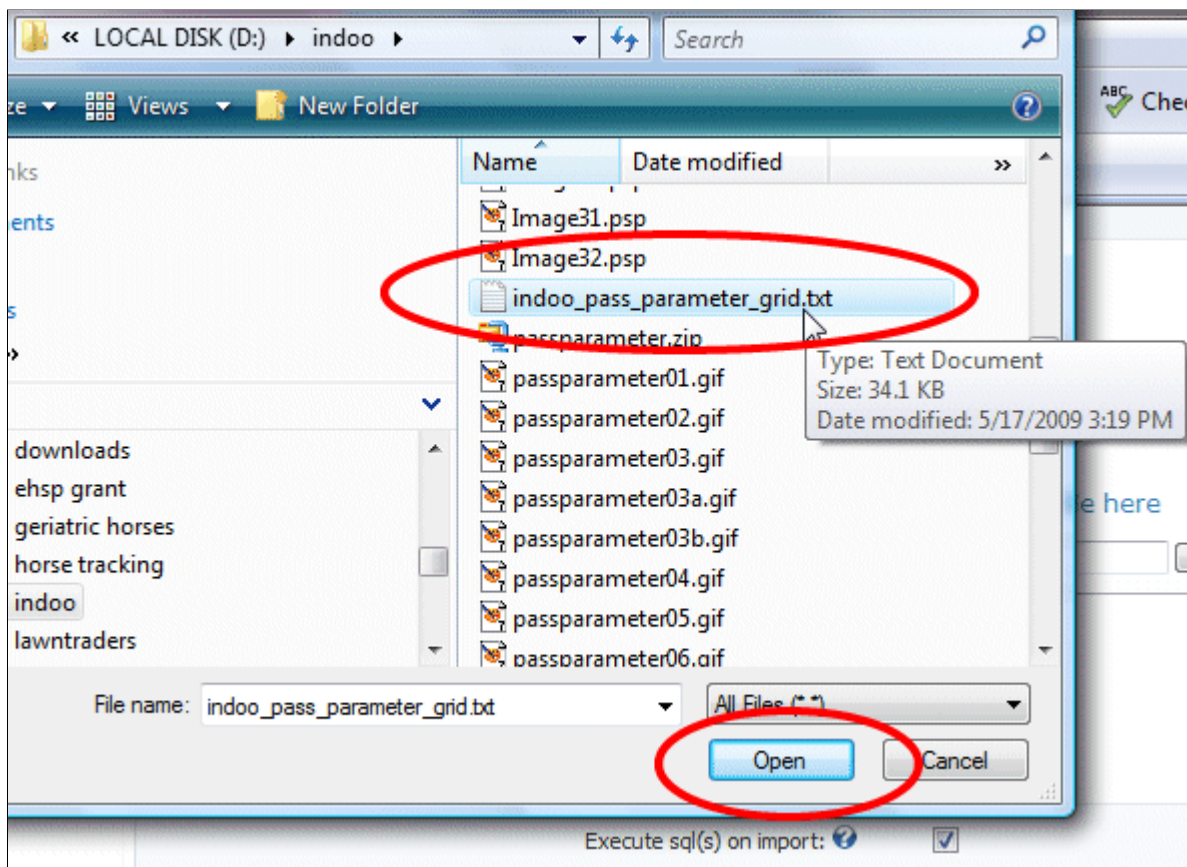
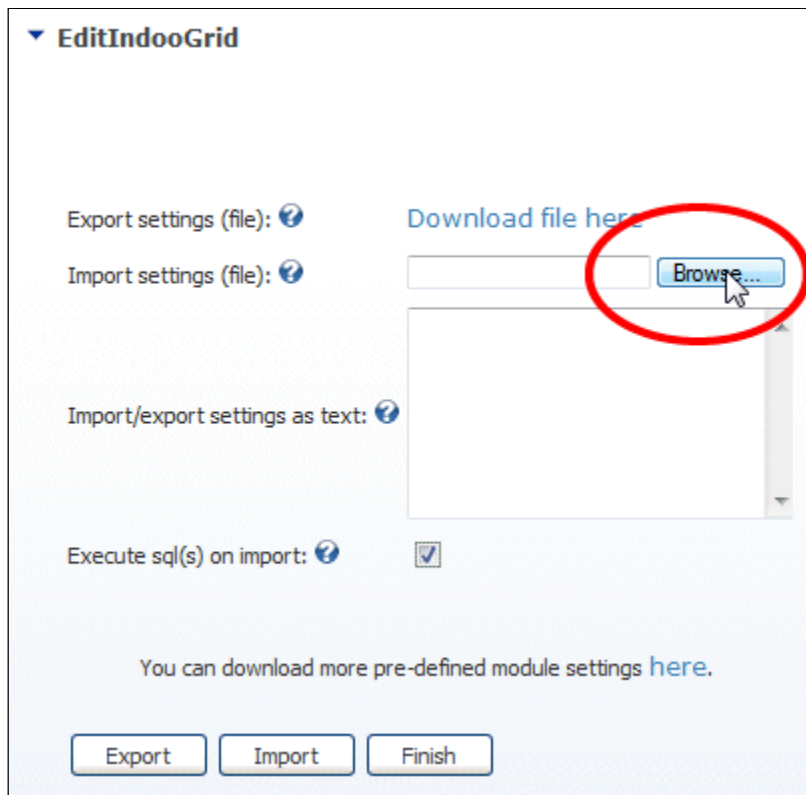
2. Open **TableSettings** for the new grid.



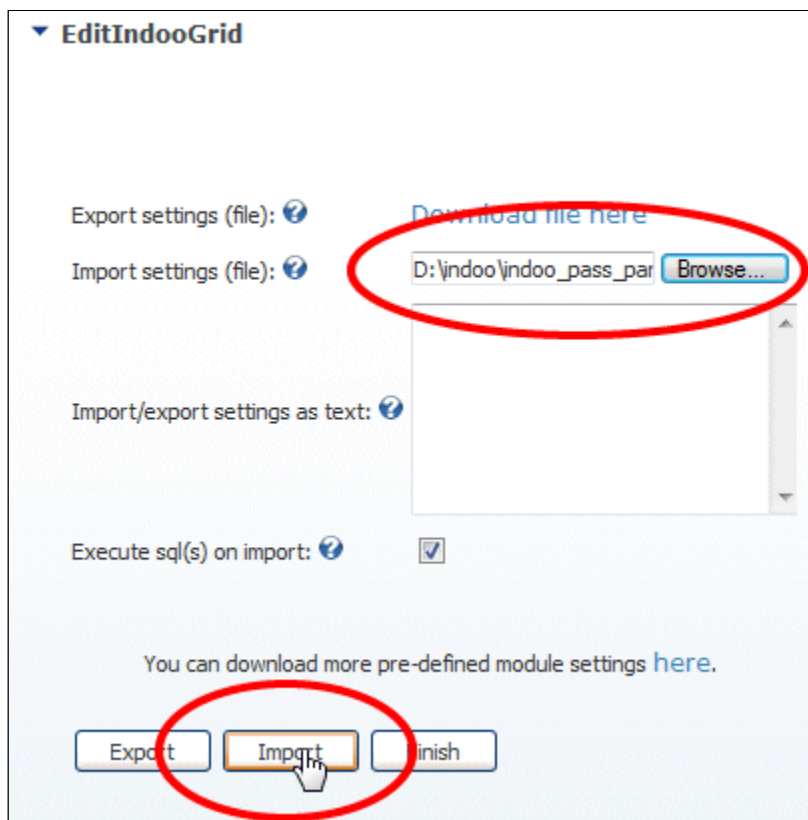
3. Click the Import-Export link



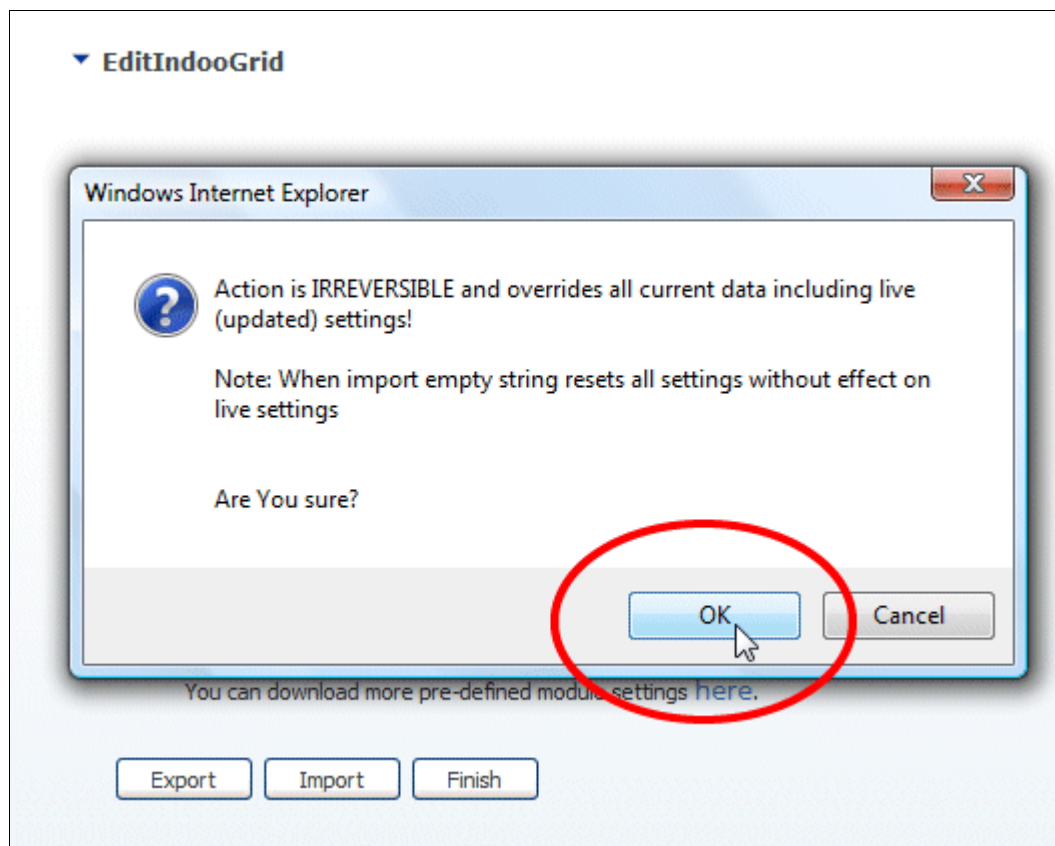
4. In the dialog page that opens, click the Browse button next to the Import settings (file) box and **browse to the location of the xml file that contains the grid structure** information.



5. **Click Import** to import the grid structure.



6. A warning dialog box will appear that says that importation is irrevocable, and asks for confirmation of your intention. To import the grid structure, **click OK**.



7. After importation, the page should reflect that the import was successful. **Click Finish**.

▼ EditIndooGrid

Export settings (file): ⓘ [Download file here](#)

Import settings (file): ⓘ

Import/export settings as text: ⓘ

Execute sql(s) on import: ⓘ

You can download more pre-defined module settings [here](#).

Import is successful!

8. The new grid will now have an identical structure to the one you imported.

EDITINDOOGRID

TABLE SETTINGS

Select db provider:

Connection string:

Table (or view):

Unique key column:

Add columns Automatically add all columns

Clear settings Remove all columns

Import or export settings Import-export

GRIDVIEW SETTINGS

Show gridView settings:

Allow bulk import:

Allow bulk export:

Allow bulk delete:

Enable insert record:

Enable edit record:

Enable inline edit:

The grid will look and function just like the grid from which the XML file was generated.

PASSTEST1 RECEIVETEST2 **IMPORT GRID** ADMIN HOST

re: Import Grid

TopPane





LeftPane ContentPane


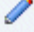


▼ Import Grid Example

Visible By Administrators Only

Filter by

Records 1-3 of 3

	mySendID	surname	dob	weight
	Click to Pass 1	Johnson	12/9/1948	130
	Click to Pass 2	Mangni	10/26/1949	185
	Click to Pass 3	McClure	3/15/1943	170

  **Table settings**  

Importing a grid structure can save a lot of time setting up a grid with similar characteristics. The importation step does not create database tables. Those must exist or be created separately.